

SSNAP

**Sentinel Stroke National
Audit Programme**

KING'S
College
LONDON

What is SSNAP?

Easy read article

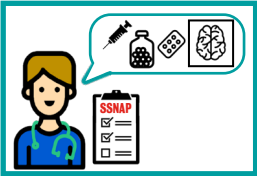
Click the question below to go to the page!

What is SSNAP?	3
What does SSNAP do with the data?	4
Who does SSNAP make reports for?	4
How much data is sent to SSNAP?	5
Information resources for England and Wales.....	6
Information resources for Northern Ireland.....	7

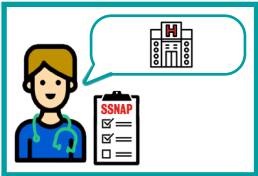
What is SSNAP?

The logo for SSNAP, consisting of the letters 'SSNAP' in a bold, red, sans-serif font, enclosed within a white square with a teal border.

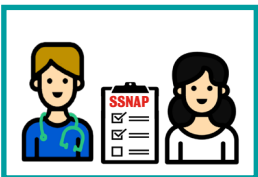
SSNAP stands for **Sentinel Stroke National Audit Programme**.



SSNAP measures the quality of **stroke care** given to patients.



SSNAP measures the **structure** of stroke **services**.



Stroke care teams **send data** to SSNAP about the care given to patients.



SSNAP receive data from teams across **England, Wales,** and **Northern Ireland**.

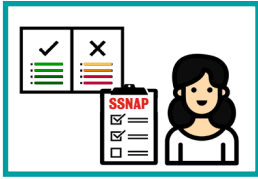


Click here for info about **what data** SSNAP collects.

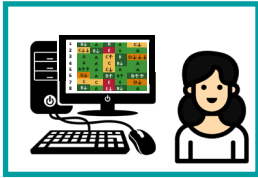


Click here for info about how SSNAP **collect, store & use** data.

What does SSNAP do with the data?



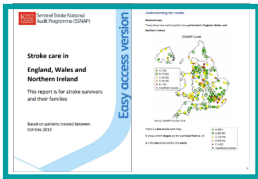
SSNAP compare teams to **national stroke care standards** and guidelines.



SSNAP create **reports**.



The reports show what stroke care teams are **doing well** and what they **need to improve**.



Click here for info about SSNAP **easy access version reports**.

Who does SSNAP make reports for?

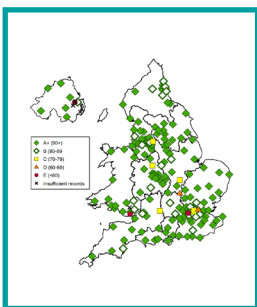
- **Hospitals**
- Community stroke care **teams**
- The **Department of Health**,
- The **NHS**
- The general **public**
- **Stroke survivors** and their **carers**.

How much data is sent to SSNAP?



SSNAP is the **single** source of **stroke data** in England, Wales, and Northern Ireland.

This lets SSNAP can compare how stroke care is delivered **across the country**.



100% of acute hospitals in England, Wales & Northern Ireland **send data to SSNAP**.

90% of expected stroke cases are **sent to SSNAP**.



Over **1 million records** have been sent to SSNAP since January 2013.



Healthcare professionals have voted SSNAP the **most effective** national clinical audit in the UK.

Information resources for England and Wales

SSNAP have **posters** to display in hospitals:



Click here for a **black and white** ward **poster**.



Click here for a **colour** ward **poster**.

SSNAP have **leaflets** for patients:



Click here for a **black and white** leaflet.



Click here for a **colour** leaflet.

Information resources for Northern Ireland

SSNAP have **posters** to display in hospitals:



Click here for a **black and white** ward **poster**.



Click here for a **colour** ward **poster**.

SSNAP have **leaflets** for patients:



Click here for a **black and white** leaflet.



Click here for a **colour** leaflet.