

SSNAP

**Sentinel Stroke National
Audit Programme**

KING'S
College
LONDON

Reports and results

Easy read article

Click the question to go to the page:

Who does SSNAP produce reports for?	3
Why does SSNAP produce reports?.....	3
What reports does SSNAP produce?	4
How often does SSNAP produce reports?	4
How do I access SSNAP reports?	5
What is SSNAP scoring?	5
Finding results about hospital care	6
Finding results about after-hospital care.....	7

Who does SSNAP produce reports for?

SSNAP produces reports for:

- hospitals
- community stroke care teams
- the Department of Health
- the NHS
- the general public
- stroke survivors and their carers.

Why does SSNAP produce reports?



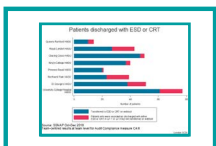
SSNAP reports show what stroke care teams are doing well.



SSNAP reports show what stroke care teams need to improve.

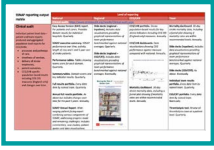


SSNAP send reports back to teams within 6 weeks of data being submitted.



This lets teams to see how they are performing in real time.

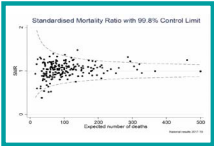
What reports does SSNAP produce?



[Click here for the list of reports that SSNAP produces.](#)



[Click here for links to more information about each of SSNAP's reports.](#)



[Click here for information about SSNAP reports on the number of stroke patient deaths \(mortality results\).](#)

How often does SSNAP produce reports?



[Click here to see how often SSNAP outputs are released.](#)



[Click here to view SSNAP's data collection and reporting schedule.](#)

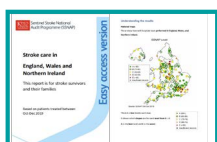
How do I access SSNAP reports?



Click here to download our guide on how to navigate SSNAP's full results section.



Click here for quick links to SSNAP Annual Reports and Organisational Audit Reports.



Click here for guidance on how to download SSNAP Easy Access Version Reports.

What is SSNAP scoring?



Click here for a list of the 10 standards of stroke care that SSNAP measures (the 10 SSNAP domains).



Click here for a full breakdown of how SSNAP calculate scores (SSNAP Simplified Technical Guidance).



Click here for a glossary of the language used in SSNAP reports.

Finding results about hospital care

SSNAP collect information about the care stroke patients receive in hospital.

This includes:

- assessments
- treatments
- therapy



Click here for the full **list of questions** SSNAP asks.

SSNAP reports about hospital care:



- National results portfolios (Excel spreadsheets)- quarterly / annual



- National quarterly Easy Access Version reports (EAVs)



- National quarterly infographics



Click here for our **guide on how to download these reports.**

Finding results about after-hospital care

SSNAP collect information about the **support** stroke patients receive after they have left hospital.

This includes after-hospital **rehabilitation, therapy, and 6 month assessment data.**

After-hospital data is collected by **community stroke care teams:**

There are **two types** of community teams on SSNAP:

- **Early Supported Discharge teams (ESD)**
- **Community Rehabilitation Teams (CRT)**



Click here for the full list of after-hospital questions SSNAP asks (ESD/Community dataset).

SSNAP reports about after-hospital care:

- National results portfolios (Excel spreadsheets with tabs for ESD/CRT and 6-month assessment data).
- National quarterly Easy Access Version Reports (EAVs)
- National public infographics
- Regional ESD/CRT slideshows



Click here for our **guide** on how to download these reports.